

# Design of Power Management Integrate Circuit Implemented at the Active EMI Filter

Sangyeong Jeong<sup>1</sup> and Jinguok Kim<sup>a</sup>

Department of Electrical Engineering, Ulsan National Institute of Science and Technology

E-mail : ljsy9121@unist.ac.kr

**Abstract** - This paper proposes the design of power management integrated circuit (PMIC) within the active EMI filter (AEF). The buck converter has been implemented with AEF circuit. The designed IC is fabricated by TSMC 180nm BCD process. Semiconductor layout design including the above PWM signal generation circuit, 45V Power NDMOS and gate driver, and the overall size of the Buck converter is 2500µm\*2500µm. The performance of the buck converter has been measured by oscilloscope after chip on board (COB) process. Input voltage range was 15v to 36v to generate 12V, and peak efficiency was measured as 66%. The AEF achieves better noise attenuation performance than 2stage L-C passive EMI filter (PEF) as about 6dB at 150khz, and the designed 1stage AEF totally attenuates 36dB from the bare noise without any resonance peak at over 1Mhz unlike the case of 2 stage L-C PEF. The active EMI filter with PMIC has been achieved better performance than larger size of passive EMI filter.

**Keywords**—Active EMI Filter (AEF), Bipolar-CMOS-DMOS (BCD) process, Conducted Emission (CE), Electromagnetic Interference (EMI), Integrated Circuits (ICs), Power Management IC (PMIC)

## I. INTRODUCTION

In the power conversion system, with higher power and smaller size, noise countermeasures (Conducted or radiated electromagnetic interference, EMI) due to conductive or radiated electromagnetic interference are being taken seriously. In the case of conductive noise, since it may cause electromagnetic malfunction or performance degradation in the connected power grid or other systems, various international standards limit the size. In order to suppress the EMI, an EMI filter is designed and usually installed at the entrance of the power line. The EMI filter blocks the noise by maximizing the impedance mismatch on the transmission path from the noise source. However, in the case of a passive EMI filter, the size and price of a device used due to a heat problem increases rapidly as the power capacity increases.

Recently, in addition to passive noise blocking, an attempt has been made to remove EMI noise by actively canceling noise as shown in Fig. 1. Thus, if conductive noise is sensed

and a signal of the opposite phase is generated and emitted, each noise is canceled, and the noise can be removed. Compared with the conventional passive EMI filter, the active EMI filter has the advantage that the size and heat generation increase according to the increase in power is insignificant. However, if an accurate power supply is not made to the active EMI filter, it is difficult to expect a malfunction of the active EMI filter and thus a noise reduction effect. Therefore, it is intended to solve the power supply problem in the active EMI filter through the design of the dc-dc converter.

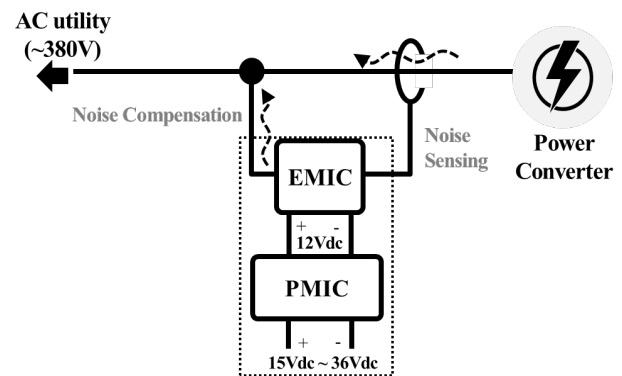


Fig. 1. Operation concept of active EMI filter with PMIC

## II. DESIGN SEPCIFICATION

Fig.2 shows the simplified structure of the buck converter, which is one of the dc-dc converters, and is largely divided into an off-chip part and an on-chip part. Off-chip part consists of LC filter and compensator, and on-chip part is again divided into power stage and controller block. For example, the designed converter circuit aims to make an output voltage of 12V by receiving an input voltage of 24V from the outside. In consideration of the operation of the active EMI filter existing in the load stage, the specification at the time of design is first determined as shown in Table 1. The ripple of the output voltage is caused by the switching operation in the buck converter, and it is limited to within 5% of the maximum output voltage in consideration of the power supply stability in the load. Also, since the output voltage from the buck converter becomes the power supply

a. Corresponding author; jinguok@unist.ac.kr

Manuscript Received Oct. 30, 2022, Revised May. 6, 2023, Accepted May. 22, 2023

This is an Open Access article distributed under the terms of the Creative Commons Attribution Non-Commercial License (<http://creativecommons.org/licenses/by-nc/4.0>) which permits unrestricted non-commercial use, distribution, and reproduction in any medium, provided the original work is properly cited.



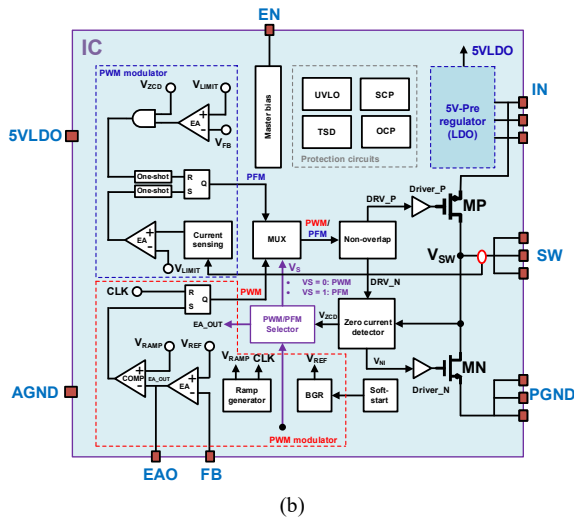


Fig. 4. Block diagram for on-chip part in buck converter

voltage should be 12V. Output current specification is confirmed as 500mA. The TSMC 0.18 $\mu$ m BCD process was employed to implement the Buck converter design, and the corresponding PDK will be utilized for the design. Fig. 4 shows the block diagram of the on-chip part of the buck converter. There are several circuits in the power stage and controller block, and we plan to design them to show optimal performance by referring to various papers and materials.

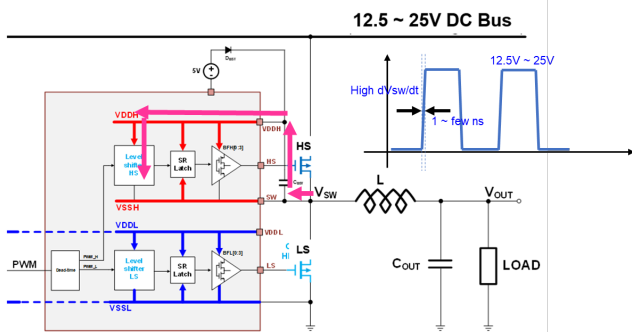


Fig. 5. Level shifter schematic and operation

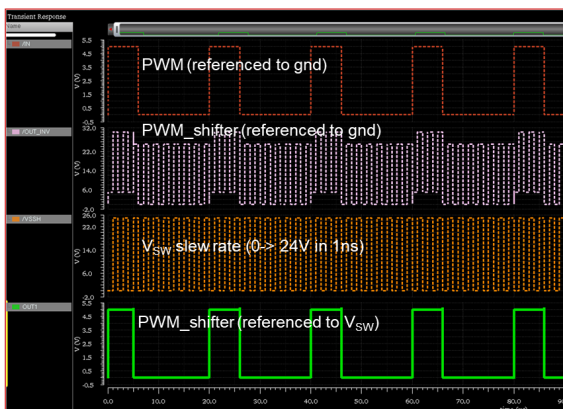


Fig. 6. Level shifter simulation

Several detail configurations of layout have been demonstrated and confirmed. The detail circuit diagram including digital circuits and analog circuits are confirmed.

Fig. 5 shows the circuit of the level shifter block with external bootstrap capacitor and diodes. The function of the level shifter was verified by simulation as shown in Fig. 6. LVS and DRC are also simultaneously checked. Over-current detection circuit are confirmed at the total system checking progress by using total circuit diagram. Other detail tuning has been performed at the LDO and BGR. Several detail configurations of layout have been demonstrated and confirmed.

Ramp generator and level shifter has been designed to achieve more accuracy for rising slope and falling slope. Those operation can be controlled by the bias current to each comparator inside the Ramp generator. Rail-to-rail Op-amp has been confirmed.

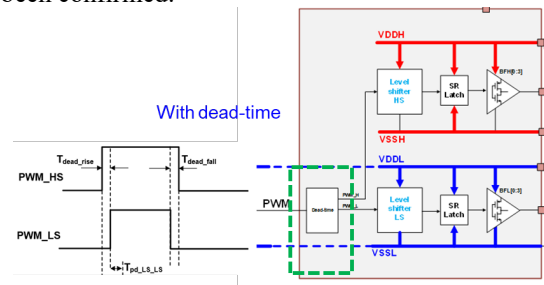


Fig. 7. PWM Controller test setup

In DC-DC converter design, the key design is the PWM signal generation circuit, and Fig.7 shows the PWM signal generation circuit diagram. An IC that can operate from 5% to 95% of duty ratio with a 1Mhz cycle is designed through a ramp generator, rail-to-rail operation-based op-amp, and various logic circuit diagrams.

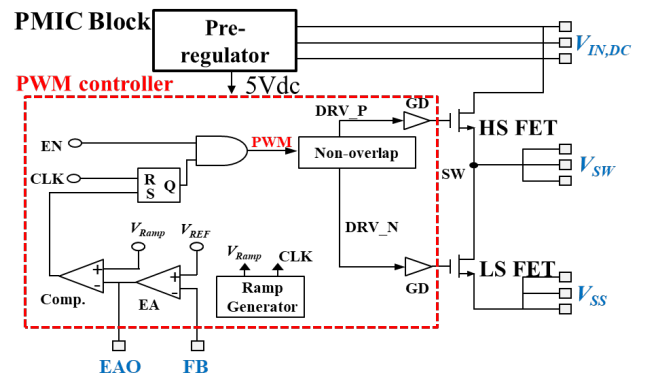


Fig. 8. Schematic of overall PMIC block

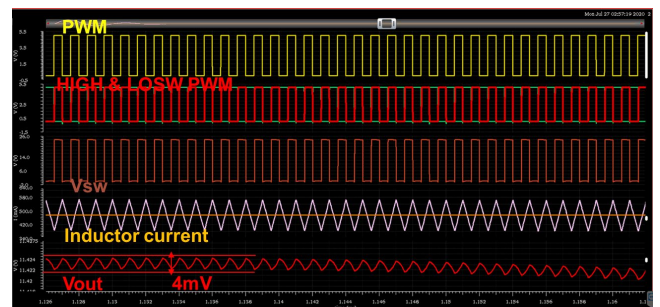


Fig. 9. PMIC simulation tests



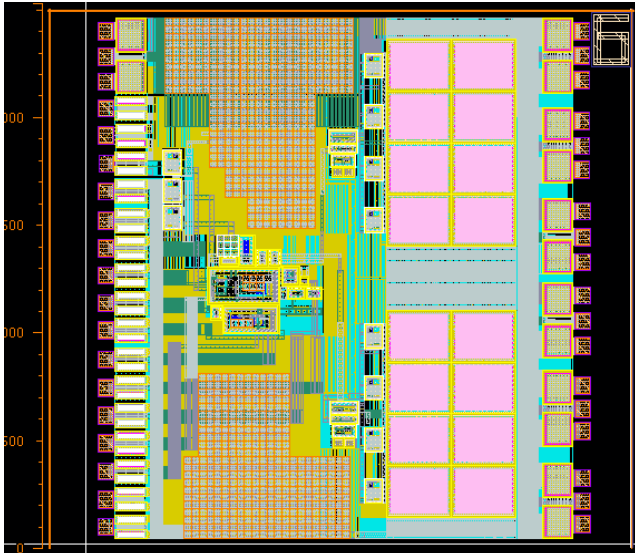


Fig. 10. Total layout of buck converter including power MOSFETs.

Fig. 8 demonstrates the overall PMIC block in the designed buck converter. The circuit includes power FETs, and the function was verified by post-layout simulation as shown in Fig. 9. Output voltage ripple was measured as 4mV and it can verify the AEF performance. Fig.10 shows the semiconductor layout design including the above PWM signal generation circuit, 45V Power NDMOS and gate driver, and the overall size of the Buck converter is 2500µm\*2500µm. In this case, the maximum output current was designed as 1 A<sub>rms,max</sub>.

IV. EXPERIMENTAL RESULTS

Fig. 11 depicts the chip-on-board process following the actual semiconductor fabrication. It has been verified that the generated PWM signal aligns with the simulation outcomes, and field test validation is currently being conducted to assess the functionality of the actual Active EMI Filter as a load in power electronics applications.

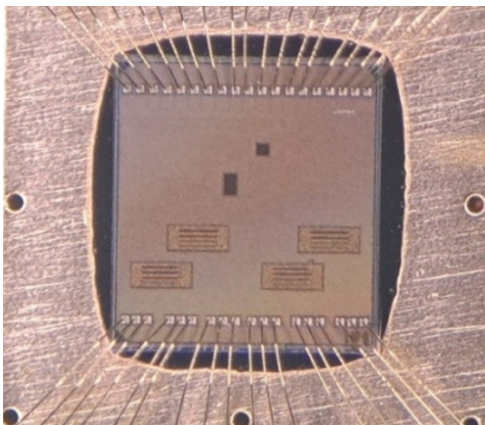


Fig. 11. Photograph of chip on board

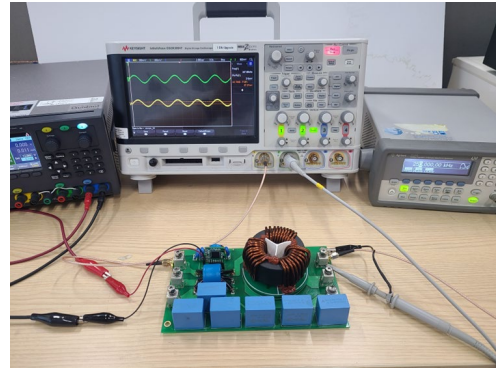


Fig. 12. Photograph of test set-up

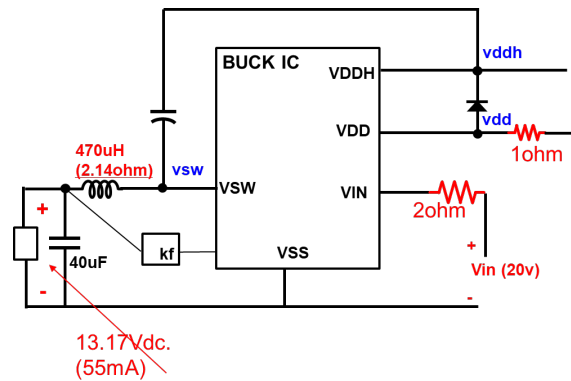


Fig. 13. Configuration of Test set-up

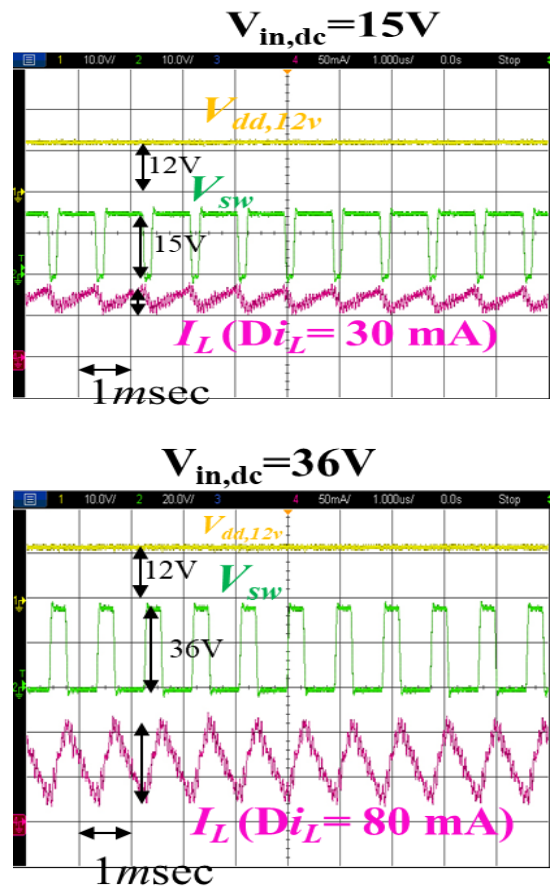


Fig. 14. Waveform of buck converter PMIC at operation of (a)  $V_{in,dc}=15V$ , and (b)  $V_{in,dc}=36V$ .

Fig.12 shows the photograph of test set-up for measuring the voltage and current at PMIC block. Fig. 13 shows the configuration of the test-setup to initialize the buck converter operation. Fig. 14 shows the measured waveform about the PMIC operation. Output inductor of 47uH and output capacitor of 20uF were designed at off-chip region. Feedback resistors and capacitors at error amplifier were also implemented at off-chip area tuned to achieve sufficient loop gain as shown in the figure. Output load of PMIC block is EMIC circuit block and 12V-region circuit at MD circuit block, and load current is estimated as 68mA at 12V supply. The designed buck converter operates based on PWM control with a fixed 1MHz switching frequency. Waveform of output voltage, switching node, and inductor current were simultaneously measured by oscilloscope when the input dc voltage is supplied by 15V and 36V, respectively. The duty ratio is well controlled according to the ratio of input voltage to fixed 12V output. Peak efficiency of total buck converter system was measured as 66.3% with input 15V and output 12V condition. Most of loss was caused to drive the initializing circuit and pre-regulator to drive the controller IC rather than switching loss. Especially pre-regulator needs to be improved.

As a result, it is possible to apply an arbitrary DC voltage up to 36V to the active EMI filter, which previously had to input only 12V, so that various system power sources can be used in practice.

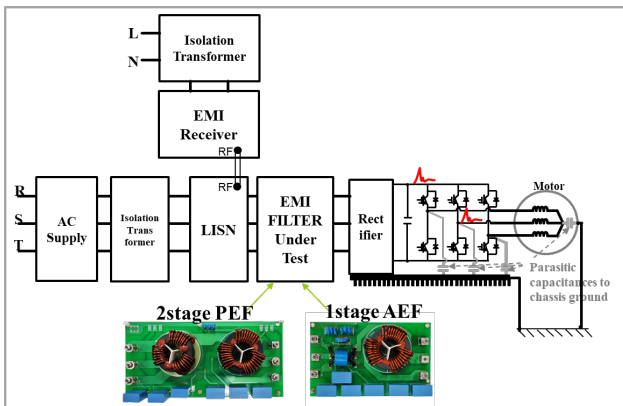


Fig. 15. Configuration of conducted emission measurement set-up

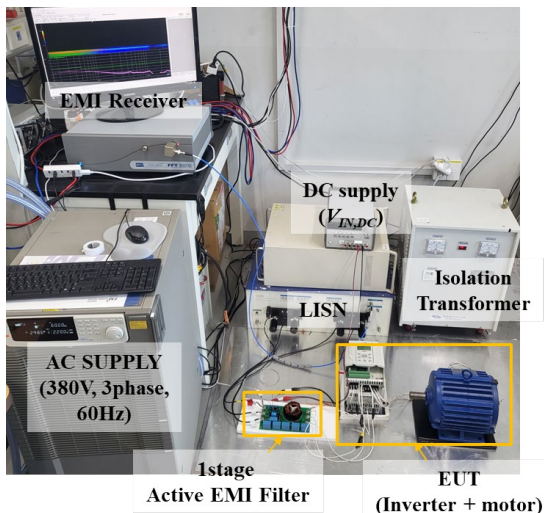
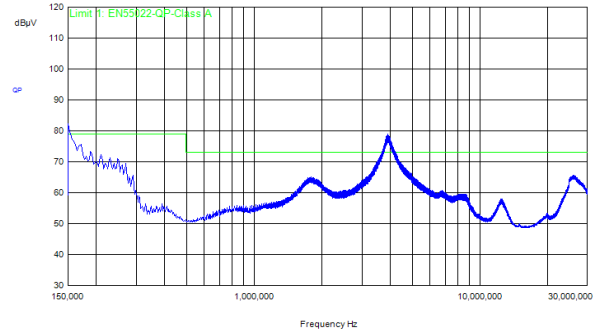
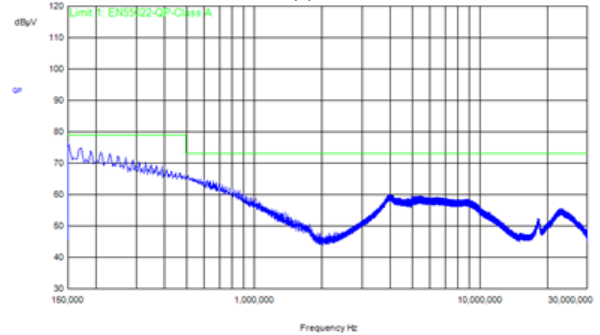


Fig. 16. Photograph of conducted emission measurement set-up



(a)



(b)

Fig. 17. Measured conducted emission of (a) 2-stage PEF and (b) 1-stage AEF with PMIC

Fig. 15 demonstrates the test set-up of the conducted emission. The noise attenuation performance of the proposed AEF with EMIC and PMIC was verified by the CE measurement with 34kW inverter and motor system as shown in Fig. 16. Bare noise of the EUT is measured as 112dBuV at 150kHz, and the noise drastically decreases after 10Mhz. To compare the noise attenuation performance with PEF, 2stage L-C passive EMI filter (PEF) and stage L-C-L PEF were compared with 1stage AEF, where the stage counts the set of CM choke and Y-capacitor. In Fig. 17, the measured CE results are summarized. The AEF achieves better noise attenuation performance than 2stage L-C PEF as about 6dB at 150kHz, and the designed 1stage AEF totally attenuates 36dB from the bare noise without any resonance peak at over 1Mhz unlike the case of 2 stage L-C PEF.

V. CONCLUSION

The manufactured chip will contribute to maximizing the noise reduction effect of the active EMI filter by solving this power supply problem. The designed buck converter operates from input voltage of 15V-36V, to generates 12V dc output voltage. Noise attenuation performance has been measured by conducted emission measurement with inverter motor, and the active EMI filter with PMIC has been achieved better performance than larger size of passive EMI filter.

ACKNOWLEDGMENT

The chip fabrication and EDA tool were supported by the IC Design Education Center (IDEC), Korea.

## REFERENCES

- [1] Nabeshima Takashi, et al., "Analysis and design considerations of a buck converter with a hysteretic PWM controller," in *2004 IEEE 35th Annual Power Electronics Specialists Conference* (IEEE Cat. no. 04CH37551). p. 1711-1716.
- [2] P. Li, L. Xue, P. Hazucha, T. Karnik and R. Bashirullah, "A Delay-Locked Loop Synchronization Scheme for High-Frequency Multiphase Hysteretic DC-DC Converters," in *IEEE Journal of Solid-State Circuits*, vol. 44, no. 11, pp. 3131-3145, Nov. 2009.
- [3] M. Al-Shyoukh, H. Lee and R. Perez, "A Transient-Enhanced Low-Quiescent Current Low-Dropout Regulator With Buffer Impedance Attenuation," in *IEEE Journal of Solid-State Circuits*, vol. 42, no. 8, pp. 1732-1742, Aug. 2007.
- [4] S. Hong and G. Cho, "High-Gain Wide-Bandwidth Capacitor-Less Low-Dropout Regulator (LDO) for Mobile Applications Utilizing Frequency Response of Multiple Feedback Loops," in *IEEE Transactions on Circuits and Systems I: Regular Papers*, vol. 63, no. 1, pp. 46-57, Jan. 2016.
- [5] D. Liu, S. J. Hollis and B. H. Stark, "A New Design Technique for Sub-Nanosecond Delay and 200 V/ns Power Supply Slew-Tolerant Floating Voltage Level Shifters for GaN SMPS," in *IEEE Transactions on Circuits and Systems I: Regular Papers*, vol. 66, no. 3, pp. 1280-1290, Mar. 2019.
- [6] Shihong Park and T. M. Jahns, "A self-boost charge pump topology for a gate drive high-side power supply," in *IEEE Transactions on Power Electronics*, vol. 20, no. 2, pp. 300-307, Mar. 2005.
- [7] Basic Calculation of a Buck Converter's Power Stage, Texas Instruments, Application Report No. SLVA477B-D, 2015.
- [8] Mattingly, D.: Designing stable compensation networks for single phase voltage mode buck regulators. Intersil Americas Inc., 2003 [Online]. Available: [www.intersil.com/data/tb/tb417.pdf](http://www.intersil.com/data/tb/tb417.pdf).
- [9] Quanzhen Duan, et al., "A Two-Module Linear Regulator with 3.9–10 V Input, 2.5 V Output, and 500 mA Load" *Electronics*, 2019.
- [10] Dawei Liu, et al., "A New Design Technique for Sub-Nanosecond Delay and 200 V/ns Power Supply Slew-Tolerant Floating Voltage Level Shifters for GaN SMPS," in *IEEE Transactions on Circuits and Systems I: Regular Papers*, vol. 66, no. 3, pp. 1280-1290, Mar. 2019.
- [11] Shihong Park, et al., "A Self-Boost Charge Pump Topology for a Gate Drive High-Side Power Supply," in *IEEE Transactions on Power Electronics*, vol. 20, no. 2, 2005.
- [12] S. Jeong, J. Park and J. Kim, "A Customized Integrated Circuit for Active EMI Filter With High Reliability and Scalability," in *IEEE Transactions on Power Electronics*, vol. 36, no. 11, pp. 12631-12645, Nov. 2021.



**Sangyeong Jeong** received the B.S. degree in electrical engineering from the Ulsan National Institute of Science and Technology, Ulsan, South Korea, in 2015, where he is currently pursuing the Ph. D. degree. His current research interests include electromagnetic compatibility (EMC) problems in the power system and the noise reduction techniques by using integrated circuits (ICs).



**Jinguok Kim** (M'09-SM'15) received his B.S., M.S., and Ph.D. degrees in electrical engineering from Korea Advanced Institute of Science and Technology, Daejeon, Korea, in 2000, 2002, and 2006, respectively. From 2006 to 2008, he was with DRAM design team in Memory Division of Samsung Electronics, Hwaseong, Korea, as a senior engineer. From January 2009 to July 2011, he worked for the EMC Laboratory at the Missouri University of Science and Technology, Missouri, USA, as a postdoc fellow. In July 2011, he joined the Ulsan National Institute of Science and Technology (UNIST), Ulsan, Korea, where he is currently a professor. His current research interests include EMC, ESD, RF interference, and analog circuits design.